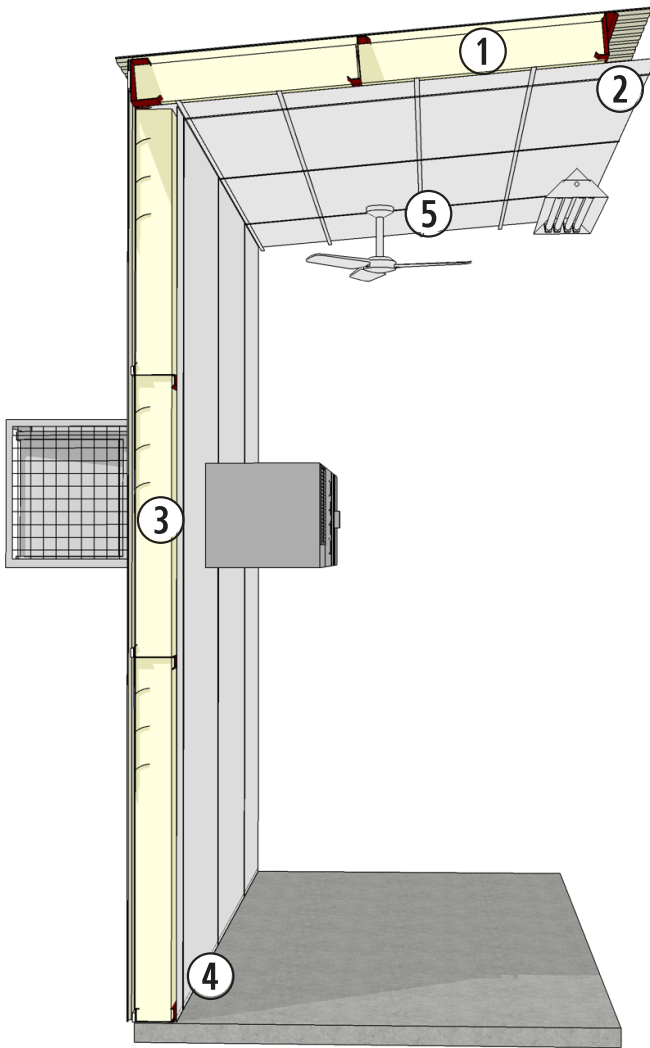


ITEMS TO CONSIDER WHEN BIDDING THE **SIMPLE SAVER SYSTEM®**

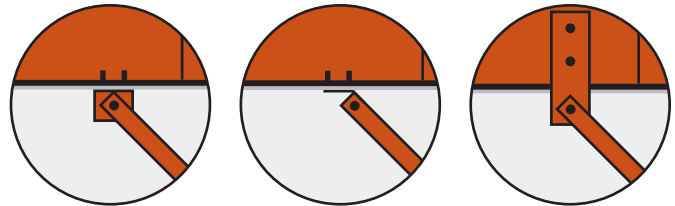


① **PURLIN SPACING**

Request 3-, 4-, 5-, and 6-foot purlin spacings from the manufacturer to match standard insulation widths.

② **BRACE CLIPS**

The movement of the typical flange brace attachment from the purlin web to the bottom of the purlin eases installation of the system and provides a more effective vapor retarder for the building. (Consult your building manufacturer for brace clip requirements.)



Several Brace Clip Options

③ **HVAC FRAMED OPENING**

Request a proper framed opening from your building manufacturer for our properly-sized EnergyCraft HVAC Appliances.

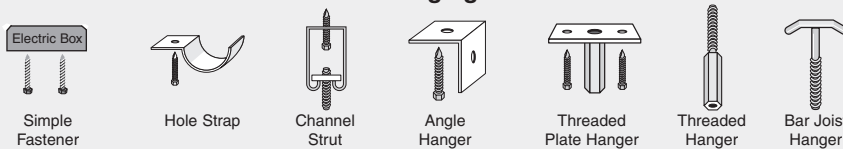
④ **BASE CHANNEL**

When wall systems are included, ask manufacturer to include 'C' girts at the foundation.

⑤ **ADVANCE INSTALLATION**

Significantly higher production rates are achieved if the Simple Saver System is installed before other trades (plumbing, electric, heating), however, it can also be installed after those trades have completed their jobs.

Common Hanging Methods



These are some of many common hangers that can be used with the Simple Saver System without cutting the vapor barrier fabric. Virtually anything can be attached to the underside of the purlins with negligible effect on the vapor barrier quality. Call Thermal Design for recommended application on any project.

Production Rates in New Buildings

Experienced crews installing a single- or double-layer Simple Saver System during sheeting process (includes labor to install Type 1 thermal block in single-layer systems):

Roof: 150-200 sq. ft./man-hour
Walls: 120-170 sq. ft./man-hour